

La structure du chromosome métaphasique

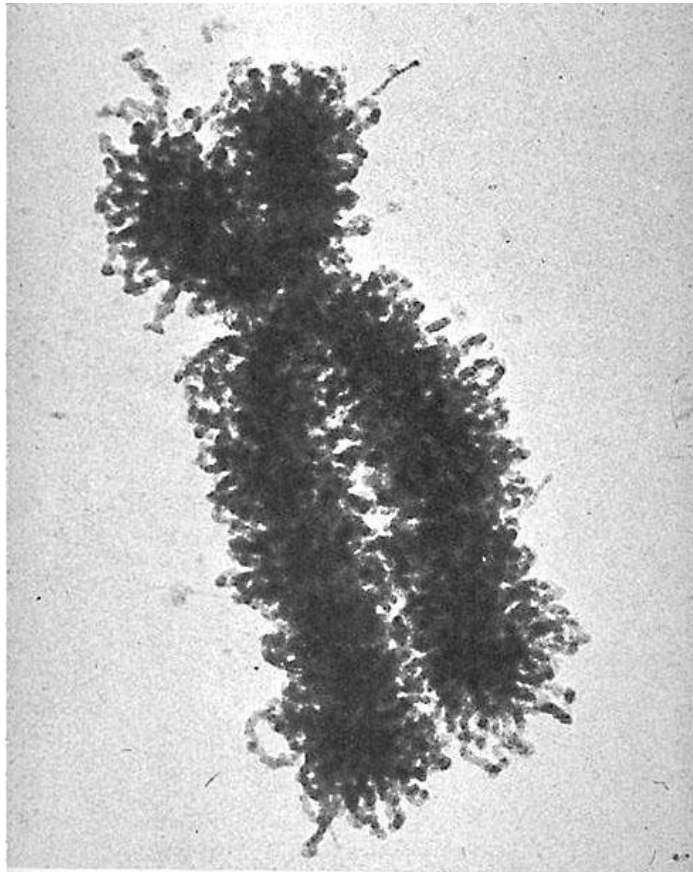
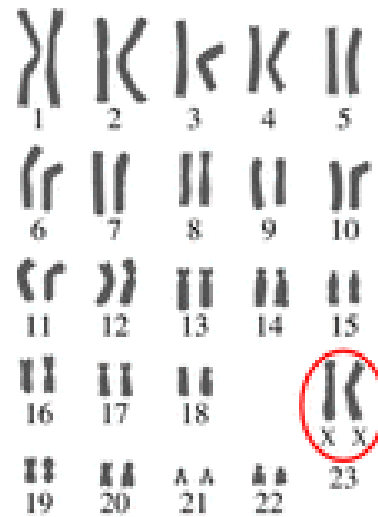
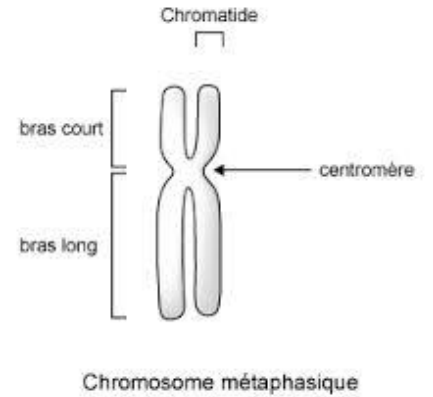
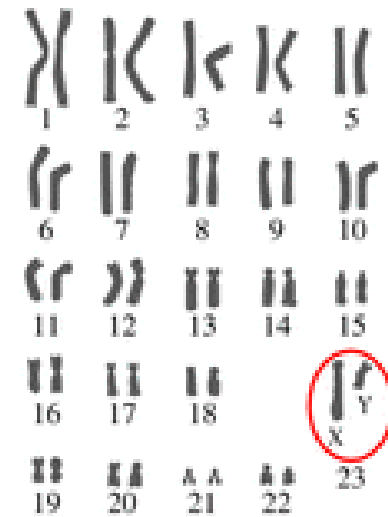


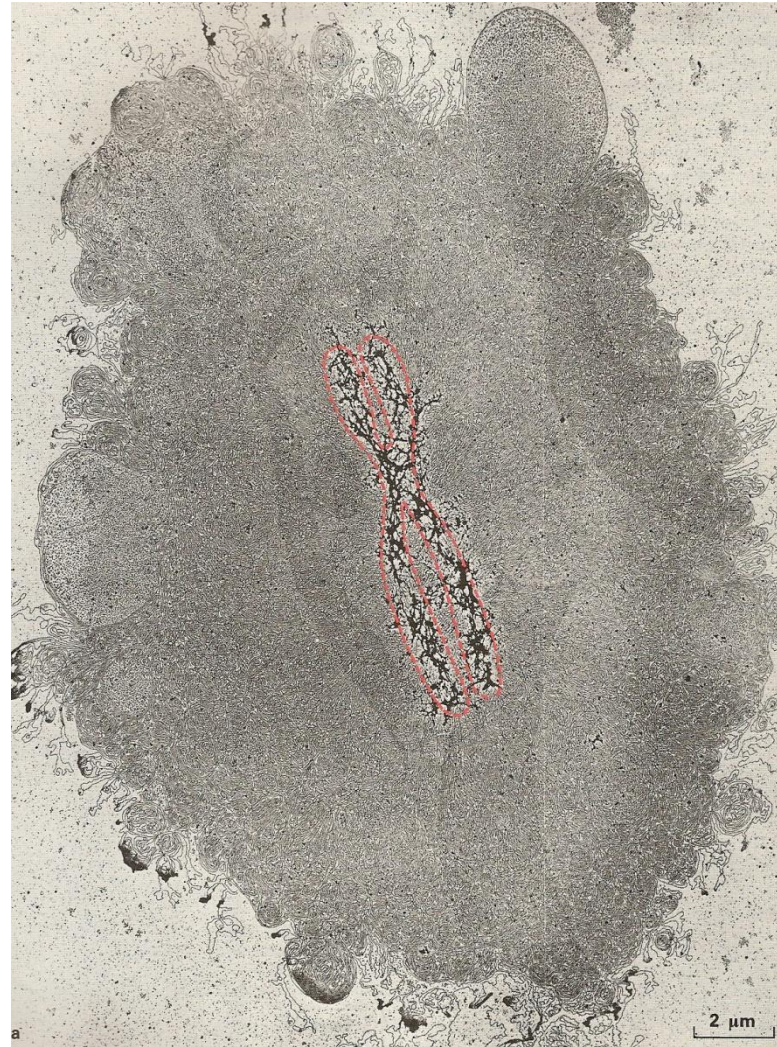
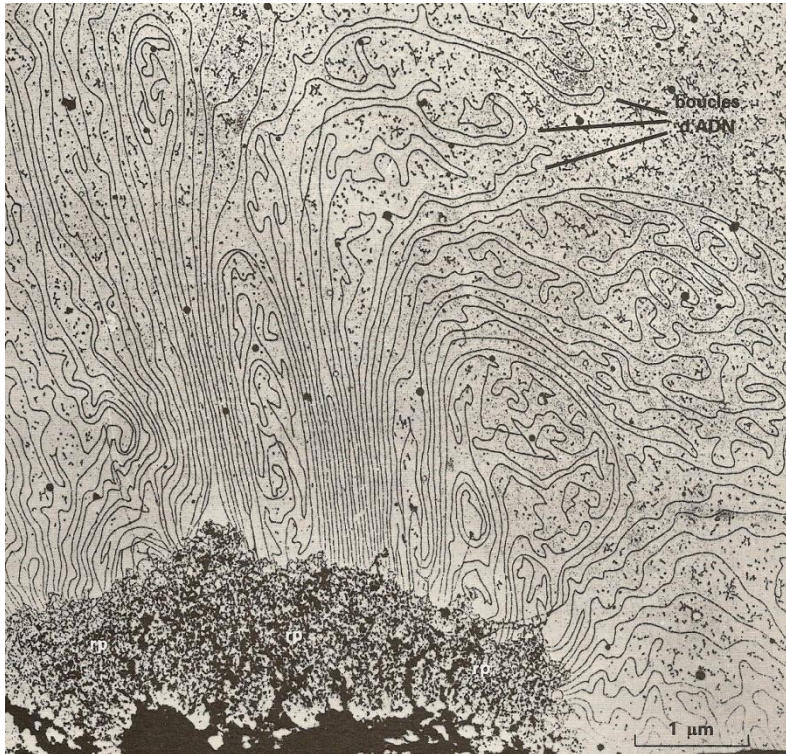
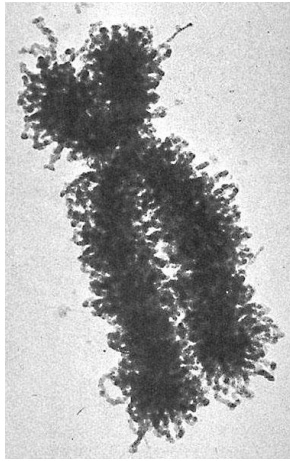
FIGURE 1-14
An electron micrograph of a human chromosome.
Chromosome XII from a HeLa cell culture. (Courtesy
of Dr. E. Du Praw.)



Caryotype d'une femme

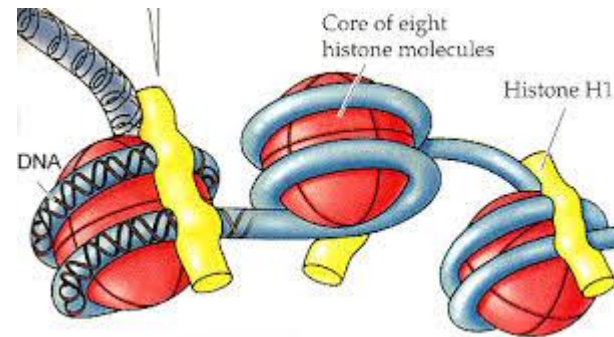
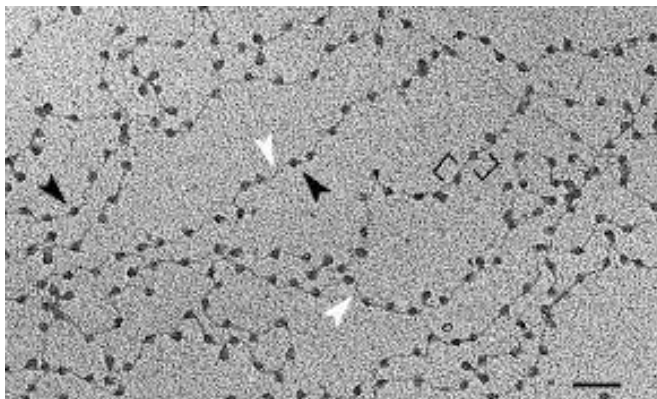
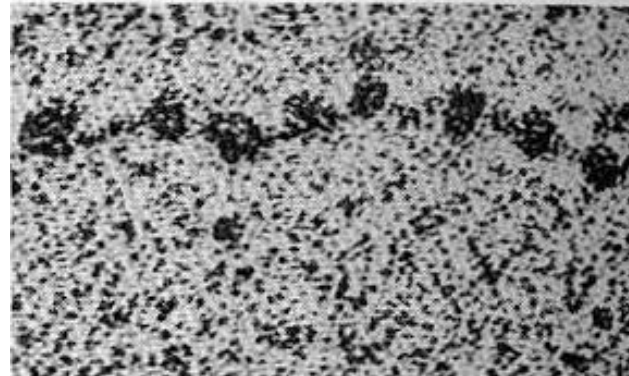
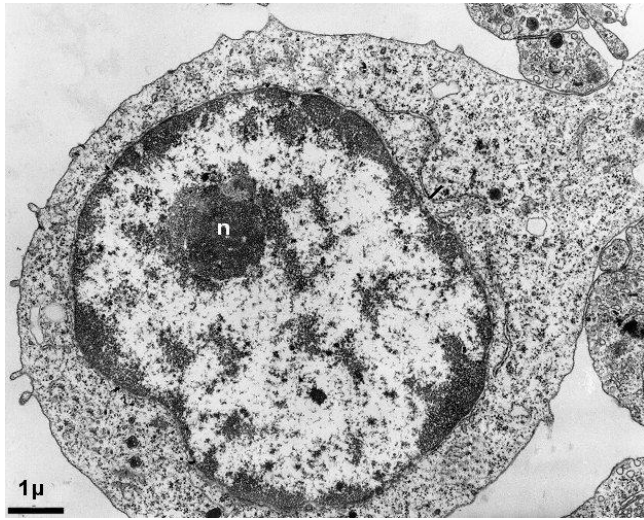


Caryotype d'un homme

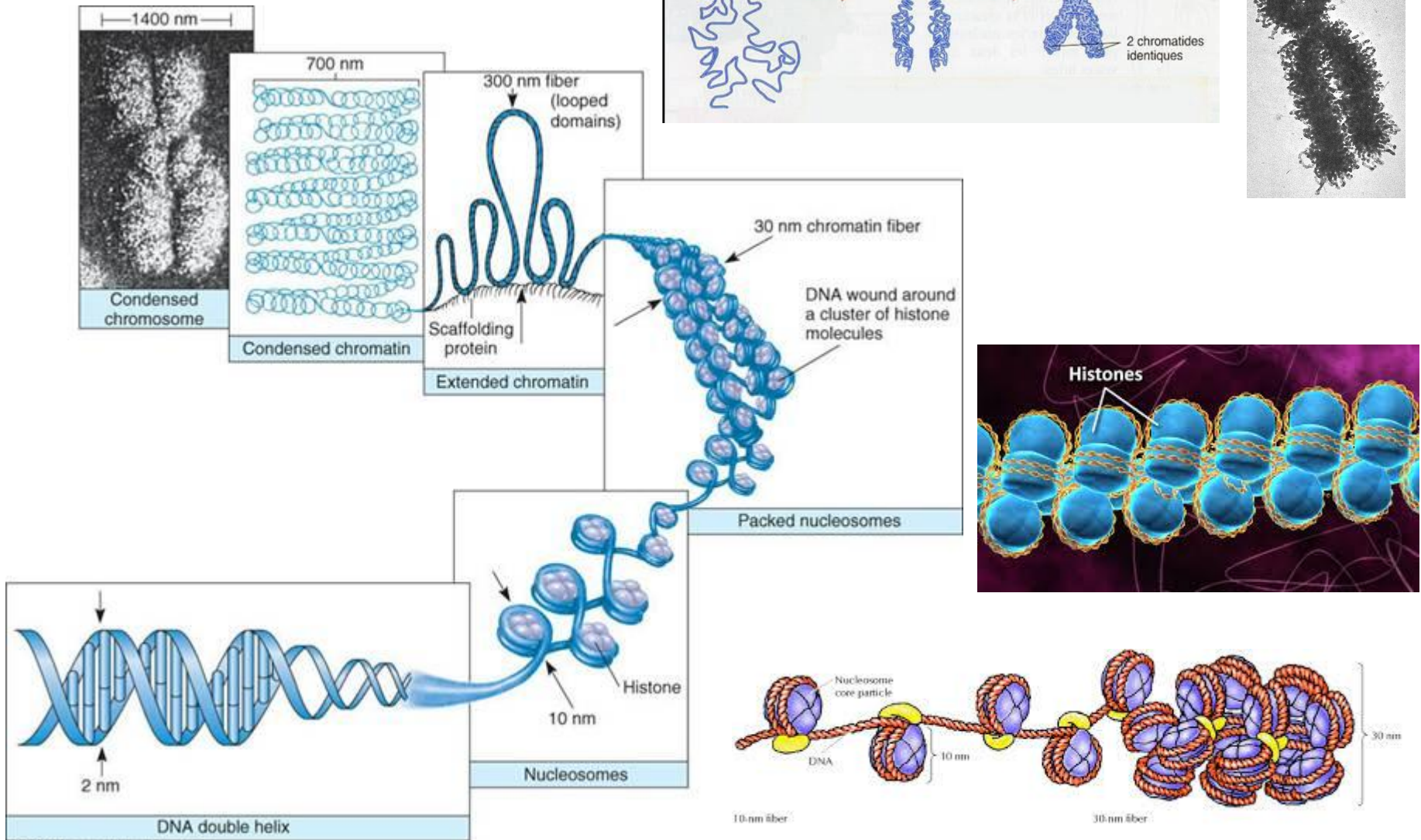


Chromosome métaphasique et fantôme

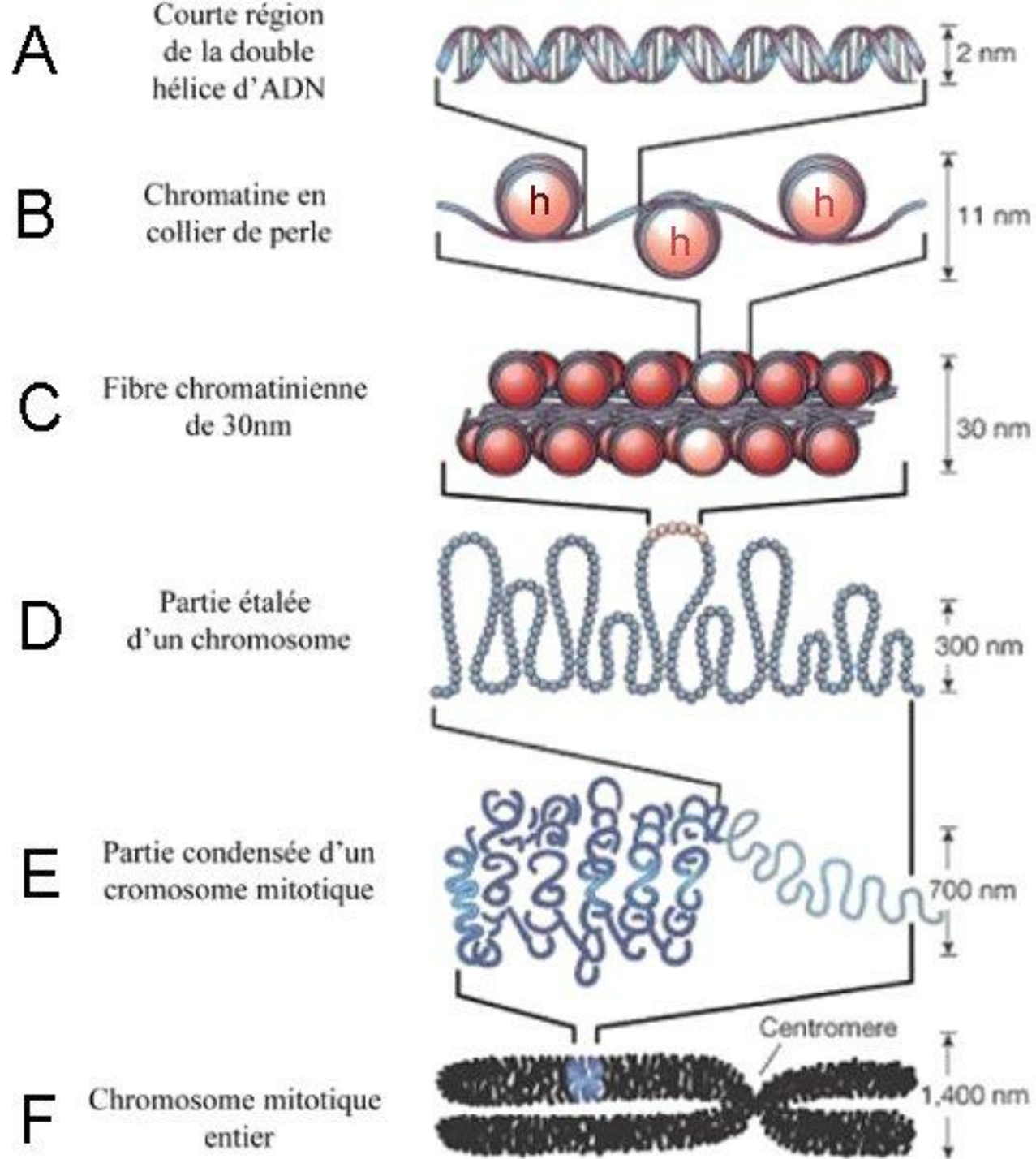
Noyau et chromatine interphasique



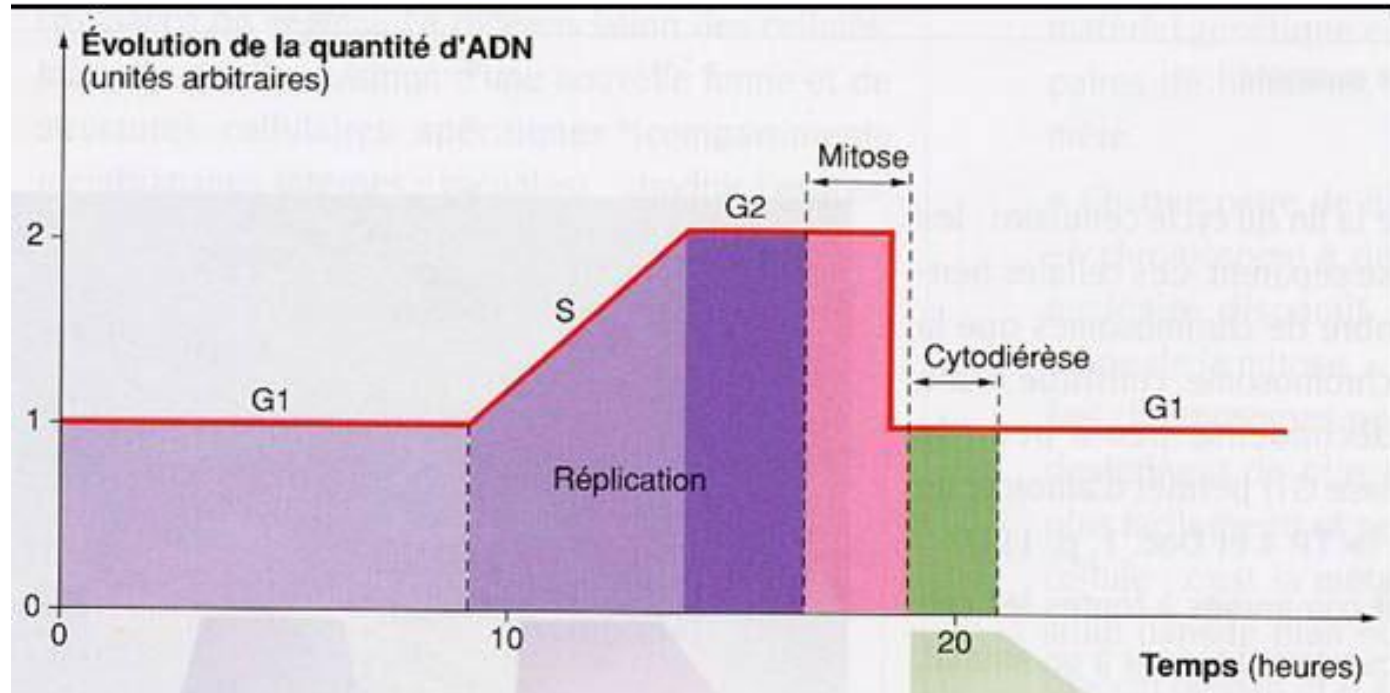
Du chromosome à la chromatine



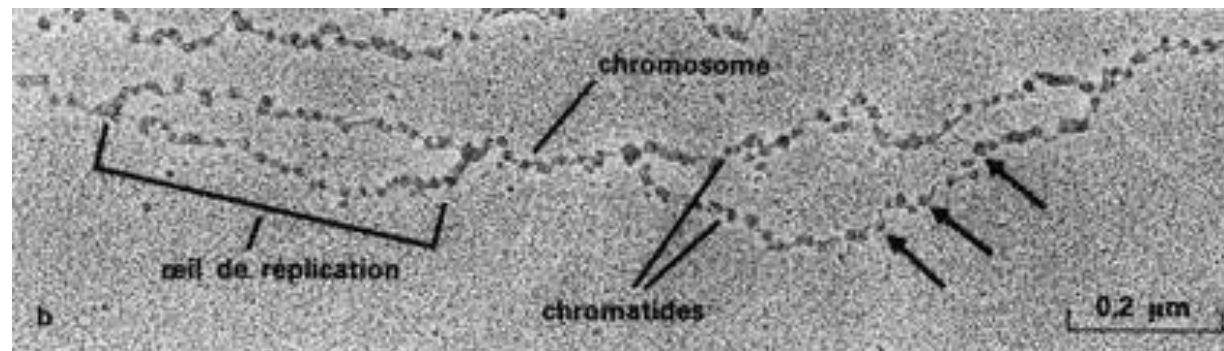
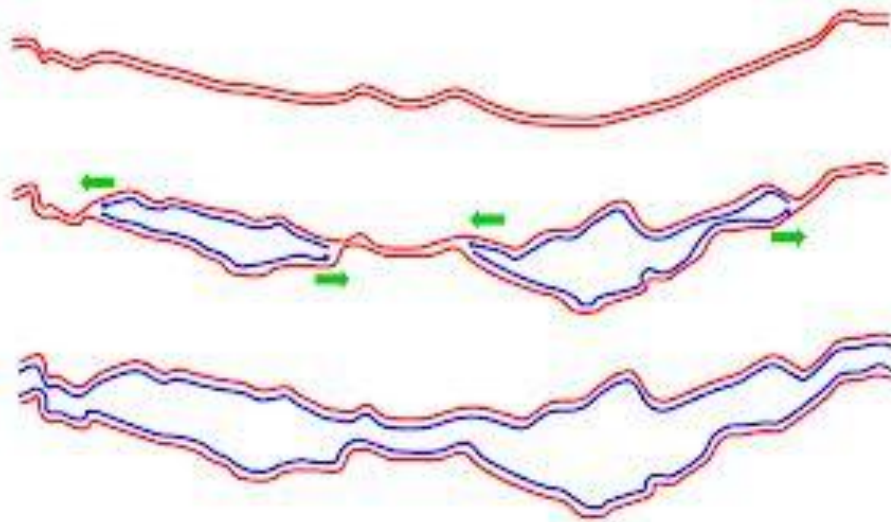
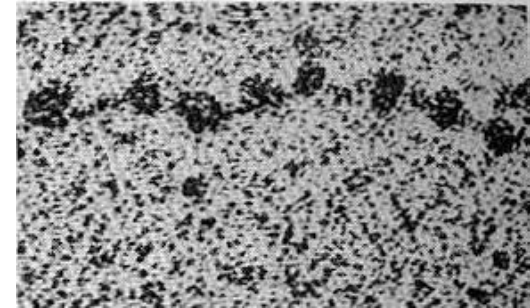
Du ch



Evolution de la quantité d'Adn au cours du temps



Duplication adn/ nucleofilament



La chromatine au cours du cycle cellulaire

